

# PROFESSIONAL GRINDER ALBA | QUICK GUIDE

Hemro International AG Thurgauerstrasse 80 | 8050 Zurich, Switzerland  
T: +41 44 864 18 00 | F: +41 44 864 18 01 info@hemrogroup.com | www.hemrogroup.com

Anfim  
MILANO

Detailed information at:

Product Page



<https://hemro.net/Alba>

Instruction Manual



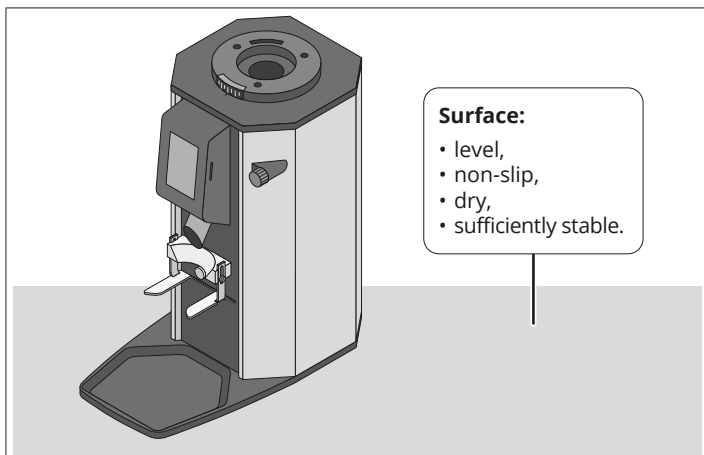
[https://hemro.net/Alba\\_Manual](https://hemro.net/Alba_Manual)

Videos

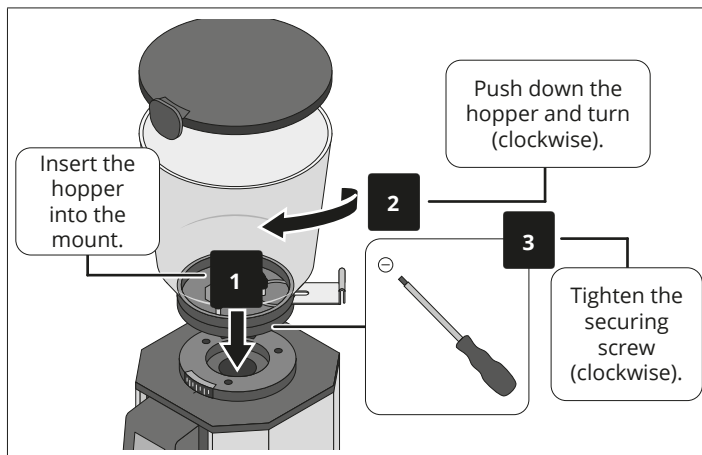


[hemro.net/Alba\\_Videos](https://hemro.net/Alba_Videos)

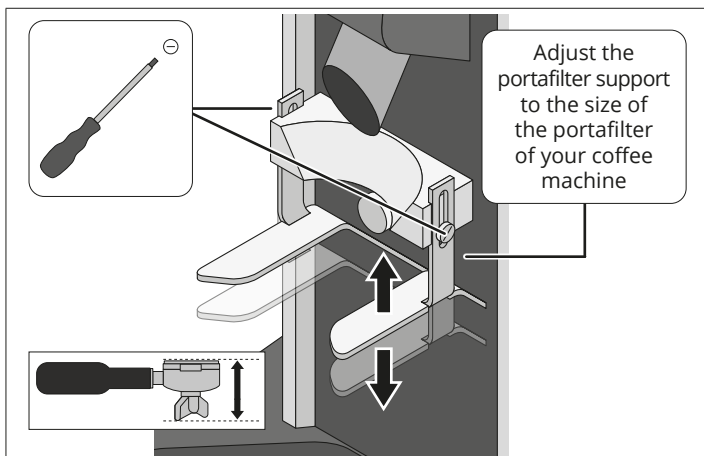
## Setting Up The Grinder



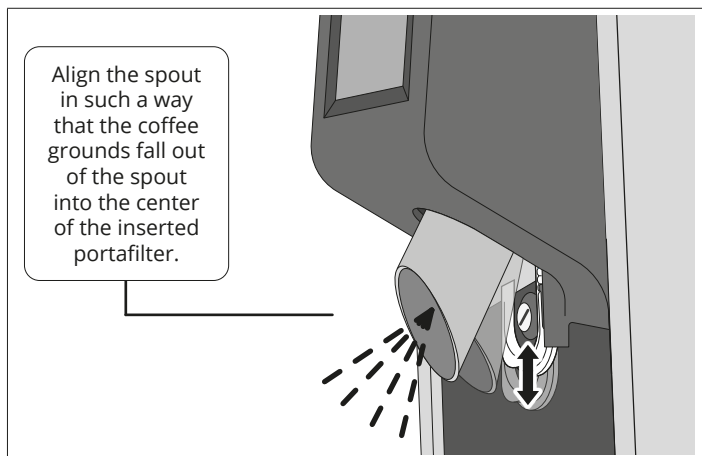
## Inserting The Hopper



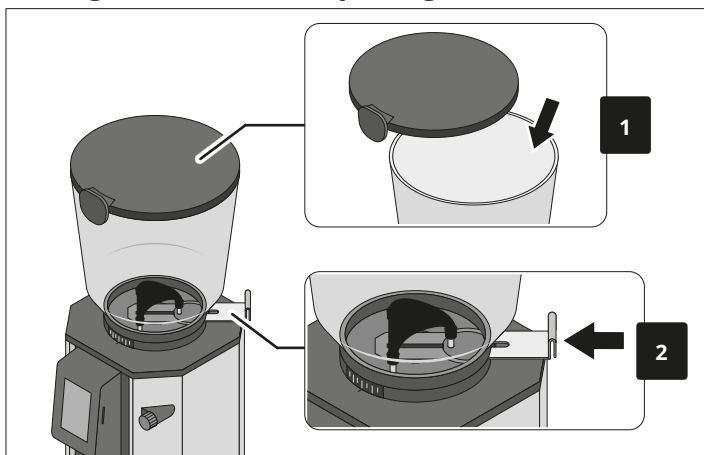
## Adjusting The Portafilter Support



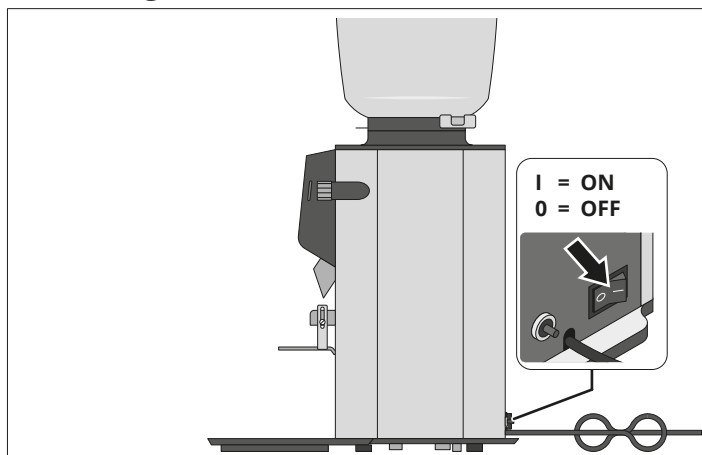
## Aligning The Spout



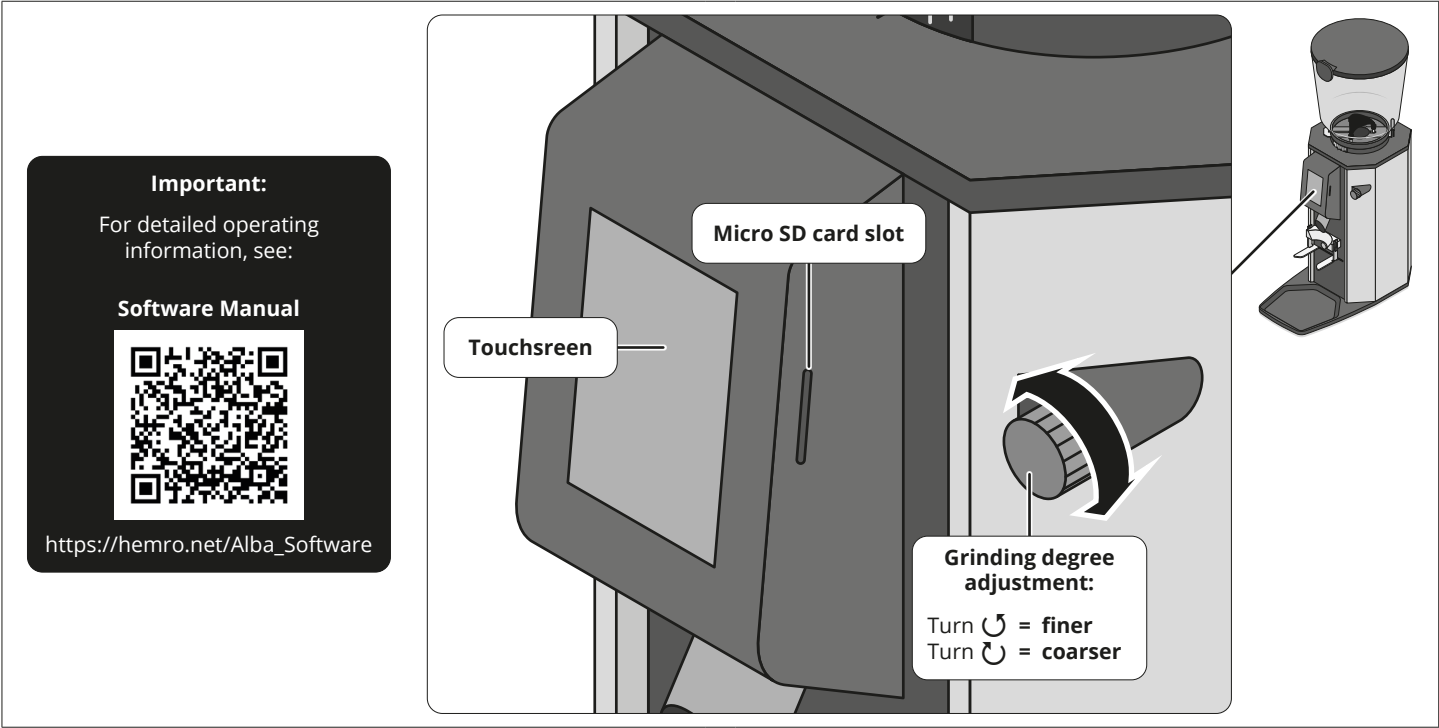
## Filling With Beans & Opening The Slider



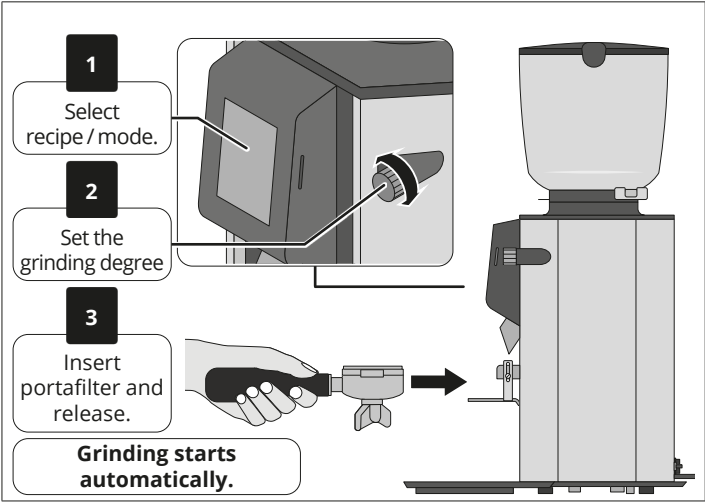
## Switching The Grinder On/Off



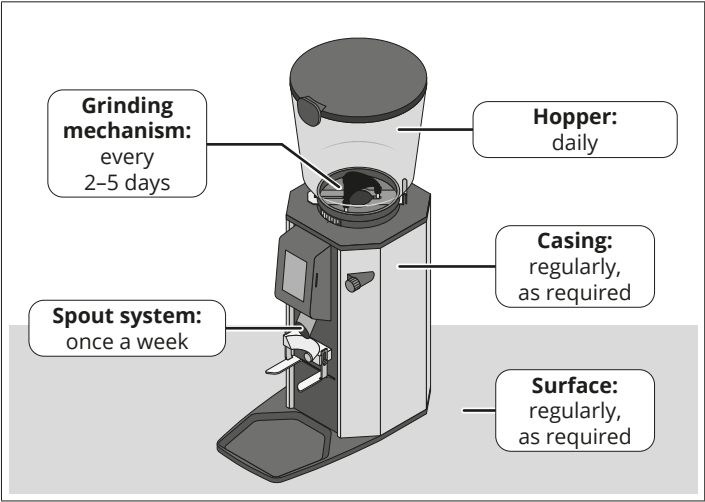
Operating The Grinder



Starting The Grinding Process



Regular Cleaning



Technical data

<b>Model:</b>	<b>Alba</b>		
<b>Voltage   Frequency   Power:</b>			
100 V   50/60 Hz   800/900 W	110-127 V   60 Hz   700 W	220-240 V   50/60 Hz   700/800 W	
<b>Protection type / Protection class:</b>		IPX1 / I ⚡	
<b>Back-up fuse:</b>		16 A-slow/15 A	
<b>Idle speed (50 / 60 Hz):</b>		1500 / 1800 rpm	
<b>Sound emission value<sup>1</sup>:</b>		70 dB(A)	

<b>Grinding capacity (fine-coarse)<sup>2</sup></b>	
<b>50 Hz:</b>	~5.6 g/s @ 250 µm
<b>60 Hz:</b>	~6.4 g/s @ 250 µm
<b>Max. daily output:</b>	50 kg
<b>Dimensions (W × H × D):</b>	210 × 620 × 386 mm
<b>Weight (net):</b>	13 kg
<b>Max. hopper filling quantity:</b>	2 kg

1) While grinding.

2) The grinding capacity depends on the coffee bean type selected, the grinding degree selected and the power frequency. The value 250 µm corresponds to the grinding disc distance from the calibrated zero point.